



Fisheries  
and Environment  
Canada

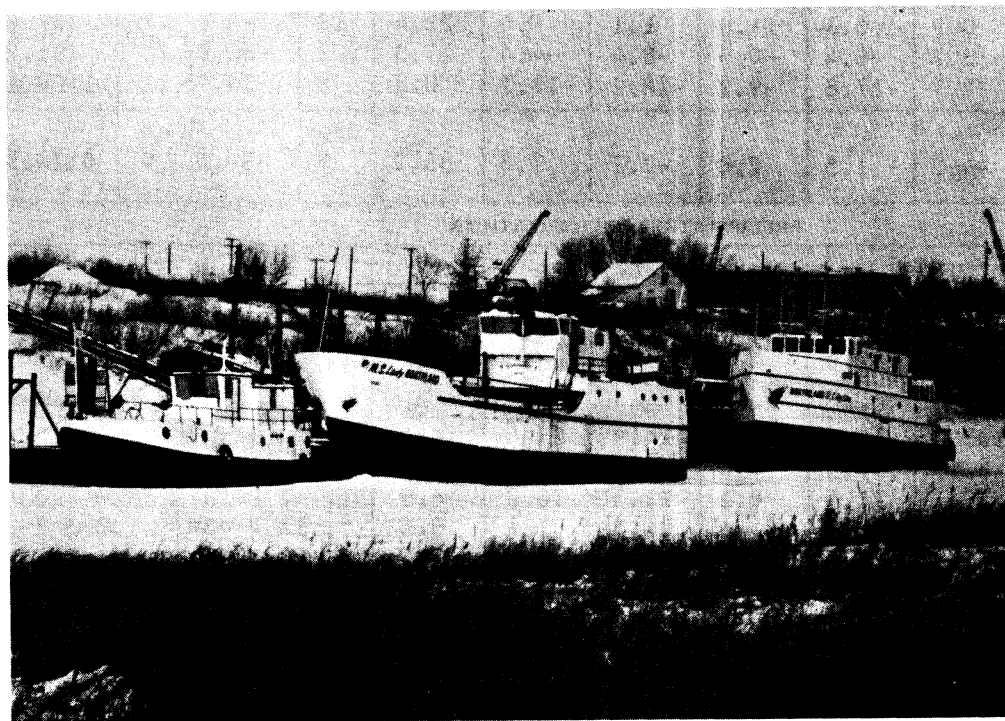
Pêches  
et Environnement  
Canada

Atmospheric  
Environment

Environnement  
atmosphérique

# WINNIPEG MANITOBA

# ANNUAL METEOROLOGICAL SUMMARY 1978 SOMMAIRE METEOROLOGIQUE ANNUEL



"WAITING FOR SPRING"

Harry-de-Paiva. CPRS.

UDC: 551.506.1  
551.506.3

ANNUAL METEOROLOGICAL SUMMARY  
SOMMAIRE MÉTÉOROLOGIQUE ANNUEL

for/pour WINNIPEG INT'L AIRPORT / AEROPORT INTERN, WINNIPEG YEAR/ANNÉE: 1978

METEOROLOGICAL DATA FOR THE CURRENT YEAR / DONNÉES MÉTÉOROLOGIQUE POUR L'ANNÉE EN COURS													
MONTH MOIS	SUNSHINE / INSOLATION				WIND / VENT								
	DURATION IN HOURS DURÉE (NOMBRE D'HEURES)	PERCENTAGE OF POSSIBLE POURCENTAGE DU TOTAL POSSIBLE	NO. OF DAYS WITHOUT SUNSHINE NOMBRE DE JOURS SANS SOLEIL	NORMAL NORMALE	AVERAGE SPEED VITESSE MOYENNE	PREVAILING DIRECTION DIRECTION DOMINANTE	NORMAL MORMALE		MAX FOR 1 MIN MAX POUR 1 MIN		HIGHEST GUST RAFALE MAXIMUM		
							SPEED VITESSE	DIRECTION	DIRECTION AND SPEED DIRECTION ET VITESSE	DATE	DIRECTION AND SPEED DIRECTION ET VITESSE	DATE	
JAN/JAN	144.5	54.1	4	112.5	18.6	NW	19.5	NW	NNE 65	25	NNE 80	25	
FEB/FÉV	179.0	63.5	1	139.4	16.4	NW	18.8	S	NNE 43	24	N 56	24	
MAR/MAR	202.3	55.0	1	170.4	18.2	S	19.6	S	NW 59	31	NW 76	31	
APR/AVR	236.0	57.2	2	208.5	21.2	SSE	21.7	S	NW 57	6	NW 67	6	
MAY/MAI	316.9	66.4	2	246.4	20.6	S	21.1	NNE	N 56	25	NW 70	25	
JUN/JUIN	280.1	57.3	0	258.9	16.7	S	18.5	S	N 52	19	N 83	19	
JUL/JUIL	305.9	62.1	1	310.8	14.1	S	16.3	S	W 59	4	NNE 80	13	
AUG/AOÛT	268.1	59.8	0	276.2	15.5	S	17.1	S	S 44	6	WNW 70	27	
SEPT/SEP	202.4	53.3	3	182.6	17.8	S	18.8	S	E, S 54	12, 25	E 80	11	
OCT/OCT	117.5	35.2	4	158.4	17.8	NNW	20.3	S	SSW 59	23	SSW 82	23	
NOV/NOV	99.6	36.5	8	81.2	16.1	S	20.3	S	W 59	5	W 106	5	
DEC/DÉC	139.5	55.1	5	86.2	12.5	S	19.5	S	S 57	29	S 85	29	
YEAR ANNÉE	2491.8	55.7	31	2231.5	17.1	SOUTH	19.3	SOUTH	NNE 65	Jan. 25	W 106	Nov. 5	
*Total Possible - 4475.8													
MONTH MOIS	BAROMETRIC PRESSURE Kps. / PRESSION BAROMÉTRIQUE Kps.												
	STATION LEVEL / NIVEAU DE LA STATION						SEA LEVEL / NIVEAU DE LA MER						
	MEAN MOYENNE	MAXIMUM MAXIMALE	DATE	MINIMUM MINIMALE	DATE	NORMAL NORMALE	MEAN MOYENNE	MAXIMUM MAXIMALE	DATE	MINIMUM MINIMALE	DATE	NORMAL NORMALE	
JAN/JAN	99.55	101.09	8	97.02	24	98.96	102.70	104.33	*9	99.99	24	102.10	
FEB/FÉV	99.57	101.89	5	97.12	24	98.90	102.68	105.19	5	100.06	24	102.01	
MAR/MAR	98.80	100.53	23	96.60	31	98.82	101.86	103.63	23	99.48	31	101.87	
APR/AVR	98.78	100.27	15	96.41	12	98.59	101.72	103.29	15	99.39	12	101.55	
MAY/MAI	98.42	99.69	1	96.82	11	98.53	101.28	102.63	1	99.66	11	101.44	
JUN/JUIN	98.24	99.74	13	96.29	10	98.31	101.12	102.66	13	99.09	10	101.17	
JUL/JUIL	98.32	99.43	10	96.99	12	98.47	101.18	102.34	10	99.78	12	101.33	
AUG/AOÛT	98.34	99.41	22	97.04	11	98.49	101.20	102.35	22	99.82	11	101.35	
SEPT/SEP	98.34	100.06	24	97.09	19	98.51	101.22	102.99	24	99.92	1, 19	101.41	
OCT/OCT	98.34	99.97	22	96.14	24	98.51	101.30	102.96	22	98.98	24	101.45	
NOV/NOV	98.89	101.52	20	96.05	8	98.63	101.96	104.75	20	98.88	8	101.65	
DEC/DÉC	98.35	100.12	31	95.14	4	98.77	101.46	103.34	31	98.05	4	101.86	
YEAR ANNÉE	98.66	101.89	Feb. 5	95.14	Dec. 4	98.62	101.64	105.19	Feb. 5	98.05	Dec. 4	101.60	
*1 Millibar = 0.02953 inches of mercury / 33.864 Millibars = 1 inch of mercury      10 (mb) = 1 Kps. = 0.02953 pouces de mercure / 33.864 millibars = 1 pouces de mercure													

\*Different date for high sea level pressure from station pressure due to correction factor being different.

ANNUAL METEOROLOGICAL SUMMARY  
SOMMAIRE MÉTÉOROLOGIQUE ANNUEL

for/pour WINNIPEG INT'L AIRPORT / AEROPORT INTERN. DE WINNIPEG YEAR/ANNÉE: 1978

METEOROLOGICAL DATA FOR THE CURRENT YEAR / DONNÉES MÉTÉOROLOGIQUE POUR L'ANNÉE EN COURS												
MINIMUM TEMPERATURES - 1978 (Degrees Celsius)												
DATE	JAN JAN	FEB FEV	MAR MAR	APR AVR	MAY MAI	JUN JUIN	JUL JUIL	AUG AOÛT	SEPT SEP	OCT OCT	NOV NOV	DEC DEC
1	-19.0	-33.2	-26.3	-10.4	1.0	4.1	18.1	10.1	16.8	8.6	2.0	-27.7
2	-14.8	-31.0	-25.5	-4.0	5.6	1.5	16.0	8.0	12.0	7.1	-0.5	-28.8
3	-22.0	-29.7	-26.7	-2.5	5.9	4.7	17.9	7.2	11.1	6.1	0.6	-27.9
4	-26.3	-31.3	-21.8	-3.2	7.6	7.6	17.6	9.8	18.7	5.3	-3.2	-16.9
5	-25.0	-36.0	-24.0	-3.2	6.5	7.0	18.2	9.5	14.1	4.9	-1.4	-22.1
6	-20.5	-25.8	-26.3	-5.6	6.4	5.7	14.0	10.0	13.6	-1.0	-5.2	-25.5
7	-24.9	-21.7	-21.2	-9.1	7.4	1.1	9.8	11.0	11.7	-2.8	-1.4	-28.0
8	-28.9	-23.5	-14.2	-5.0	5.7	3.5	10.4	10.2	15.5	2.9	-1.6	-27.3
9	-33.1	-26.6	-14.6	0.6	1.1	4.1	8.9	9.0	13.0	0.8	-5.3	-28.8
10	-32.0	-23.5	-15.2	-0.5	7.4	11.8	6.5	16.0	11.0	3.0	-12.2	-27.8
11	-22.0	-23.8	-11.9	-2.8	3.6	7.4	12.6	17.0	11.5	2.2	-13.6	-13.2
12	-22.1	-21.6	-16.0	-3.5	-0.1	5.0	13.0	15.2	7.2	-0.4	-9.8	-17.4
13	-23.2	-23.9	-17.1	-2.5	-1.1	4.8	12.3	16.9	6.9	0.3	-5.3	-17.8
14	-22.0	-16.0	-15.5	-2.6	4.8	13.8	12.6	15.2	9.9	-0.6	-10.2	-16.1
15	-30.1	-20.5	-16.7	-3.9	10.2	13.3	15.2	9.0	7.4	-2.8	-12.7	-9.8
16	-33.3	-22.2	-21.6	-3.1	13.0	15.8	15.2	7.2	9.4	-4.7	-11.5	-12.4
17	-29.1	-19.4	-16.4	3.3	14.1	10.0	17.8	14.1	6.4	-2.4	-13.0	-18.0
18	-29.2	-23.0	-6.8	-1.0	7.2	8.5	15.4	7.1	11.0	-4.2	-18.9	-16.2
19	-27.5	-18.5	-11.5	-6.2	2.4	7.5	12.3	8.0	5.6	5.0	-26.7	-11.3
20	-26.4	-22.7	-6.2	-6.1	0.0	8.5	12.1	9.5	2.9	6.8	-30.7	-18.3
21	-23.9	-19.2	-1.6	-5.9	7.2	6.9	9.6	7.2	1.8	1.2	-22.6	-10.8
22	-21.0	-11.1	-10.2	1.0	12.0	13.0	8.0	3.4	6.1	-1.2	-22.6	-24.0
23	-11.6	-9.0	-17.5	2.8	16.2	15.2	11.0	11.7	8.0	-3.0	-18.8	-28.9
24	-15.0	-16.0	-14.7	-0.2	15.2	16.5	15.2	14.6	3.2	3.4	-19.4	-28.7
25	-29.5	-21.2	-2.4	2.3	11.7	12.6	16.5	13.3	7.5	1.5	-20.0	-23.4
26	-31.9	-24.5	0.6	0.8	13.5	10.9	12.0	17.5	2.3	-1.1	-15.8	-25.2
27	-31.0	-22.6	-1.7	3.7	10.0	12.4	5.8	13.2	2.3	-3.7	-27.2	-34.7
28	-25.9	-28.3	-5.8	6.3	14.7	13.4	14.3	11.7	3.8	-5.6	-29.6	-32.9
29	-26.3		-6.2	2.3	9.9	17.2	10.5	4.8	5.3	2.8	-26.1	-24.4
30	-28.0		-1.0	0.1	8.8	17.8	10.2	1.4	2.5	0.5	-29.4	-27.9
31	-29.5		-6.7		6.8		10.5	9.9		-0.3		-31.5

for/pour WINNIPEG INT'L AIRPORT / AÉROPORT INTERN. DE WINNIPEG YEAR/ANNÉE: 1978

METEOROLOGICAL DATA FOR THE CURRENT YEAR / DONNÉES MÉTÉOROLOGIQUE POUR L'ANNÉE EN COURS												
DAILY RAINFALL - 1978 MMS												
DATE	JAN JAN	FEB FEV	MAR MAR	APR AVR	MAY MAI	JUN JUN	JUL JUIL	AUG AOÛT	SEPT SEP	OCT OCT	NOV NOV	DEC DEC
1						4.5		0.4	1.8	Tr.		
2						Tr.	0.6	3.0		1.0		
3				Tr.		Tr.	Tr.	Tr.		2.7	Tr.	
4							13.0		0.2	0.4	8.2	
5				13.2	0.2	Tr.	1.0			0.8		
6				4.4		2.2	Tr.	1.8	Tr.	0.2		
7					Tr.	Tr.						
8				0.8	22.8	Tr.	9.8		Tr.			
9				1.0		Tr.	Tr.	0.2				
10				Tr.	4.2	Tr.						
11					0.8	Tr.				0.2		
12						Tr.	5.8		55.0	0.3		Tr.
13							Tr.	0.6	5.6	0.2		
14						11.5	Tr.	Tr.	4.7	1.8		
15						Tr.	1.0			0.6		
16						0.8	1.0		7.0			
17						4.0	11.3	Tr.	Tr.		Tr.	
18									1.4			
19					12.0	10.6	1.2		1.8			
20						Tr.	Tr.					
21			Tr.				Tr.	Tr.		Tr.		
22							8.8	Tr.		Tr.		
23					12.8			0.3				
24					0.6	10.5	0.2			0.6		
25			Tr.		60.2			Tr.		Tr.		
26			Tr.			0.2	Tr.	0.4	1.4	0.6		
27			Tr.			7.2	Tr.	11.8		Tr.		
28				Tr.			3.7	Tr.	3.5		Tr.	
29							0.6		0.2	Tr.	Tr.	
30			0.4		Tr.		Tr.					
31			7.8		9.0		2.6					
TOTAL	Nil	Nil	8.2	19.4	122.6	51.5	60.6	18.5	82.6	9.4	8.2	Tr.

ANNUAL METEOROLOGICAL SUMMARY  
SOMMAIRE MÉTÉOROLOGIQUE ANNUEL

for/pour WINNIPEG INT'L AIRPORT / AÉROPORT INTERN. DE WINNIPEG YEAR/ANNÉE: 1978

METEOROLOGICAL DATA FOR THE CURRENT YEAR / DONNÉES MÉTÉOROLOGIQUE POUR L'ANNÉE EN COURS												
DAILY PRECIPITATION - 1978 (mm)												
DATE	JAN JAN	FEB FEV	MAR MAR	APR AVR	MAY MAI	JUN JUN	JUL JUIL	AUG AOÛT	SEPT SEP	OCT OCT	NOV NOV	DEC DEC
1	1.6	Tr.	Tr.	Tr.		4.5		0.4	1.8	Tr.		
2	Tr.	Tr.	Tr.	2.0		Tr.	0.6	3.0		1.0		
3	Tr.	Tr.	Tr.	Tr.		Tr.	Tr.	Tr.		2.7	Tr.	Tr.
4	Tr.	1.0					13.0		0.2	0.4	8.2	0.5
5	1.9	Tr.	Tr.	13.2	0.2	Tr.	1.0			0.8	Tr.	0.2
6	2.8	Tr.	Tr.	4.6		2.2	Tr.	1.8	Tr.	0.2		Tr.
7	Tr.	Tr.			Tr.	Tr.						
8	Tr.	Tr.		0.8	22.8	Tr.	9.8		Tr.			
9	Tr.	Tr.	Tr.	1.0		Tr.	Tr.	0.2				
10	Tr.	Tr.		Tr.	4.2	Tr.						Tr.
11		0.2	Tr.	Tr.	0.8	Tr.				0.2	Tr.	
12	Tr.			0.9		Tr.	5.8		55.0	0.3	6.8	0.6
13	Tr.	Tr.		Tr.			Tr.	0.6	5.6	0.2	10.0	0.2
14	0.2	Tr.	Tr.			11.5	Tr.	Tr.	4.7	1.8	0.5	
15	0.2	0.2				Tr.	1.0			0.6	Tr.	
16	Tr.	Tr.	Tr.			0.8	1.0		7.0		Tr.	
17	Tr.	Tr.				4.0	11.3	Tr.	Tr.		0.2	Tr.
18	0.2								1.4		2.9	
19		0.2	Tr.	0.3	12.0	10.6	1.2		1.8		Tr.	7.0
20			2.8			Tr.	Tr.					Tr.
21			Tr.				Tr.	Tr.		Tr.		1.8
22	Tr.	1.1					8.8	Tr.		Tr.	0.6	Tr.
23	Tr.	1.0			12.8			0.3			0.6	
24	0.6	3.5			0.6	10.5	0.2			0.6	0.2	Tr.
25	2.8	Tr.	Tr.		60.2			Tr.		Tr.	0.2	0.2
26		Tr.	Tr.			0.2	Tr.	0.4	1.4	0.6	9.8	Tr.
27		0.3	Tr.			7.2	Tr.	11.8		0.8	0.4	Tr.
28	Tr.	Tr.	Tr.	Tr.			3.7	Tr.	3.5		2.0	10.0
29	Tr.						0.6		0.2	Tr.	0.2	0.4
30	Tr.		0.4		Tr.		Tr.				Tr.	
31	Tr.		8.2		9.0		2.6					
TOTAL	10.3	7.5	11.4	22.8	122.6	51.5	60.6	18.5	82.6	10.2	42.6	20.9

for/pour WINNIPEG INT'L AIRPORT / AÉROPORT INTERN, DE WINNIPEG

YEAR/ANNÉE: 1978

MONTHLY AND ANNUAL EXTREMES OF RECORD / EXTRÊMES MENSUELLES ET ANNUELLES AUX REGISTRES														
MONTH MOIS	TEMPERATURE / TEMPÉRATURE								PRECIPITATION / PRÉCIPITATIONS					
	ABSOLUTE MAXIMUM ABSOLU	YEAR ANNÉE	ABSOLUTE MINIMUM ABSOLU	YEAR ANNÉE	HIGHEST MONTHLY MEAN MOYENNE MENSUELLE MAXIMALE	YEAR ANNÉE	LOWEST MONTHLY MEAN MOYENNE MENSUELLE MINIMALE	YEAR ANNÉE	GREATEST MONTHLY PRECIPITATION MENSUELLE MAXIMALE	YEAR ANNÉE	LEAST MONTHLY PRECIPITATION MENSUELLE MINIMALE	YEAR ANNÉE	GREATEST MONTHLY SNOWFALL NEIGE MENSUELLE MAXIMALE	YEAR ANNÉE
JAN/JAN	7.8	1942	-44.4	1877	-10.6	1944	-26.9	1875	85.3	1916	2.5	1973	85.3	1916
FEB/FÉV	11.7	1958	-45.0	1966	-5.1	1878	-26.1	1875	89.9	1881	2.5	1903	89.9	1881
MAR/MAR	23.3	1946	-38.9	1880*	1.6	1878	-16.1	1899	76.2	1904	1.5	1939	76.2	1904
APR/AVR	33.9	1952	-27.8	1932	9.4	1915	-2.8	1893	143.3	1896	2.0	1949	44.5	1872
MAY/MAI	37.8	1934	-11.7	1907	17.8	1977	4.4	1907	177.7	1977	0.8	1917	32.5	1931
JUN/JUIN	38.3	1900	-6.1	1888*	20.3	1910	12.3	1969	255.8	1901	3.3	1961	1.3	1875
JUL/JUIL	42.2	1936	1.1	1972	24.2	1936	15.4	1884	197.4	1953	13.5	1875		
AUG/AOÛT	40.6	1949	-1.1	1910*	21.6	1961	14.4	1977	180.6	1876	3.3	1915		
SEPT/SEP	37.2	1929*	-8.3	1899	16.8	1948	8.0	1965	156.2	1872	1.3	1948	18.3	1872
OCT/OCT	30.0	1922	-20.6	1936	12.8	1963	0.3	1877	144.0	1949*	2.5	1976	38.6	1919
NOV/NOV	23.9	1975	-36.7	1875	1.3	1923	-13.9	1896	90.2	1955	0.8	1976	80.3	1955
DEC/DÉC	11.7	1939	-47.8	1879	-3.4	1877	-25.9	1879	101.3	1909	2.5	1892	101.3	1909
YEAR ANNÉE	42.2	1936	-47.8	1879	5.3	1931	-1.7	1883	723.4	1962	320.8	1961	266.1	1909

PERIOD OF RECORD/PÉRIOD DE REGISTRE:

Mean values based on standard period -

1941 - 1970

\*Other Years

Extremes from complete station record -

1872 - 1978

**NOTE:** September - Max. also in 1906.  
August - Min. also in 1891.  
June - Min. also in 1902.  
March - Min. also in 1873.  
October - Greatest Pcpn. also in 1898.